

VGS™3010 MOUNTING-KITS



- ▶ Fits standard robot end-of-arm tooling interfaces.
- ▶ Easy attachment to standard extrusion and profile systems.
- ▶ Flexible positioning.
- ▶ Quick setup and change-over.
- ▶ Durable and non-rotating installation.

<P/>

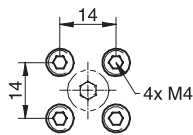
TECHNICAL DATA, SPECIFIC

| Description | Unit | Value | | | | | |
|-------------|------|---------|-------------|--------------------|--------------------|-------------|---------|
| | | 0106915 | 0106927 | 0106949 | 0108488 | 0108731 | 0108734 |
| Material | | SS, NBR | SS, PA, NBR | Al, SS, Steel, NBR | Al, SS, Steel, NBR | AL, SS, NBR | SS, NBR |
| Weight | g | 24 | 24 | 36 | 22 | 46 | 70 |

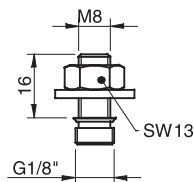
ORDERING INFORMATION

| | Description | Art. No. |
|---|------------------------|----------|
| A | 4x M4 top, flush mount | 00 |
| B | M8 16 mm | 0106927 |
| C | M8 27 mm, profile kit | 0106949 |
| D | M6 22 mm, profile kit | 0108488 |
| E | Ball joint VGS™3010 | 0108731 |
| F | Lock pin VGS™3010 | 0108734 |

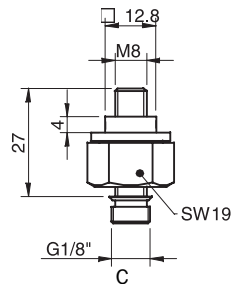
B-D 4x plug G1/8" included.



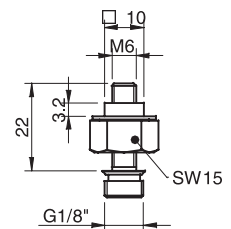
A



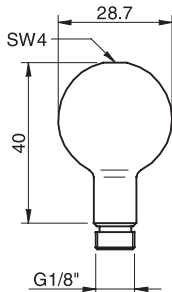
B



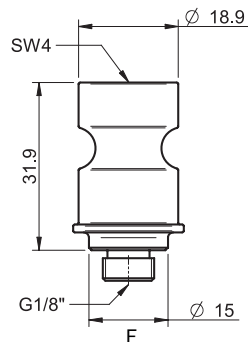
C



D



E



F

Vacuum grippers
VGS™3010