

P3010 QUICK RELEASE MODULE



- ▶ Patented multistage COAX® cartridge - MINI - with Pi, Si, Xi cartridge.
- ▶ Quick release volume from 3-60 cm³
- ▶ Includes a flow-through silencer and a built-in vacuum filter for harsh environments.
- ▶ Slim, compact, configurable and modular design.
- ▶ Low weight.

TECHNICAL DATA

Description	Unit	Value
Feed pressure, max.	MPa	0.7
Noise level	dBA	66-68
Temperature range	°C	-10-50
Weight	g	168-320
Material		PP, PA, NBR, Al, SS

PERFORMANCE TABLES

Depending upon choice of COAX® Cartridge, performance data of the P3010 can be found in the tables for vacuum flow, evacuation time and blow flow on the P3010 or COAX® Cartridge datasheets.

ORDERING INFORMATION

1. Select housing	P3010 Code
Housing, connection $\varnothing=6$ mm	00
Housing, connection 1/8" NPSF	01

2. COAX® cartridge modules	P3010 Code
COAX® cartridge module Pi12-3FSx1	AE
COAX® cartridge module Pi12-3FSx1, non-return valve	AF
COAX® cartridge module Pi12-3FSx2	AG
COAX® cartridge module Pi12-3FSx2, non-return valve	AH
COAX® cartridge module Si08-3FSx1	AA
COAX® cartridge module Si08-3FSx1, non-return valve	AB
COAX® cartridge module Si08-3FSx2	AC
COAX® cartridge module Si08-3FSx2, non-return valve	AD
COAX® cartridge module Xi10-3FSx1	AI
COAX® cartridge module Xi10-3FSx1, non-return valve	AJ
COAX® cartridge module Xi10-3FSx2	AK
COAX® cartridge module Xi10-3FSx2, non-return valve	AL

3. Select connection and function module	P3010 Code
A Function Quick-release connection, 10 and 6 mm, 3 cm ³	04
B Function Quick-release connection, 8 and 6 mm, 30 cm ³	05
C Function Quick-release connection, 8 and 6 mm, 60 cm ³	06
B Function Quick-release connection, 10 and 6 mm, 30 cm ³	07
C Function Quick-release connection, 10 and 6 mm, 60 cm ³	08
A Function Quick-release connection, 1/4" NPSF and 6 mm, 3 cm ³	09
B Function Quick-release connection, 1/4" NPSF and 6 mm, 30 cm ³	10
C Function Quick-release connection, 1/4" NPSF and 6 mm, 60 cm ³	11
A Function Quick-release connection, 8 and 6 mm, 3 cm ³	12

4. Select ES	P3010 Code
No energy saving	AA
Valve DS23	AB

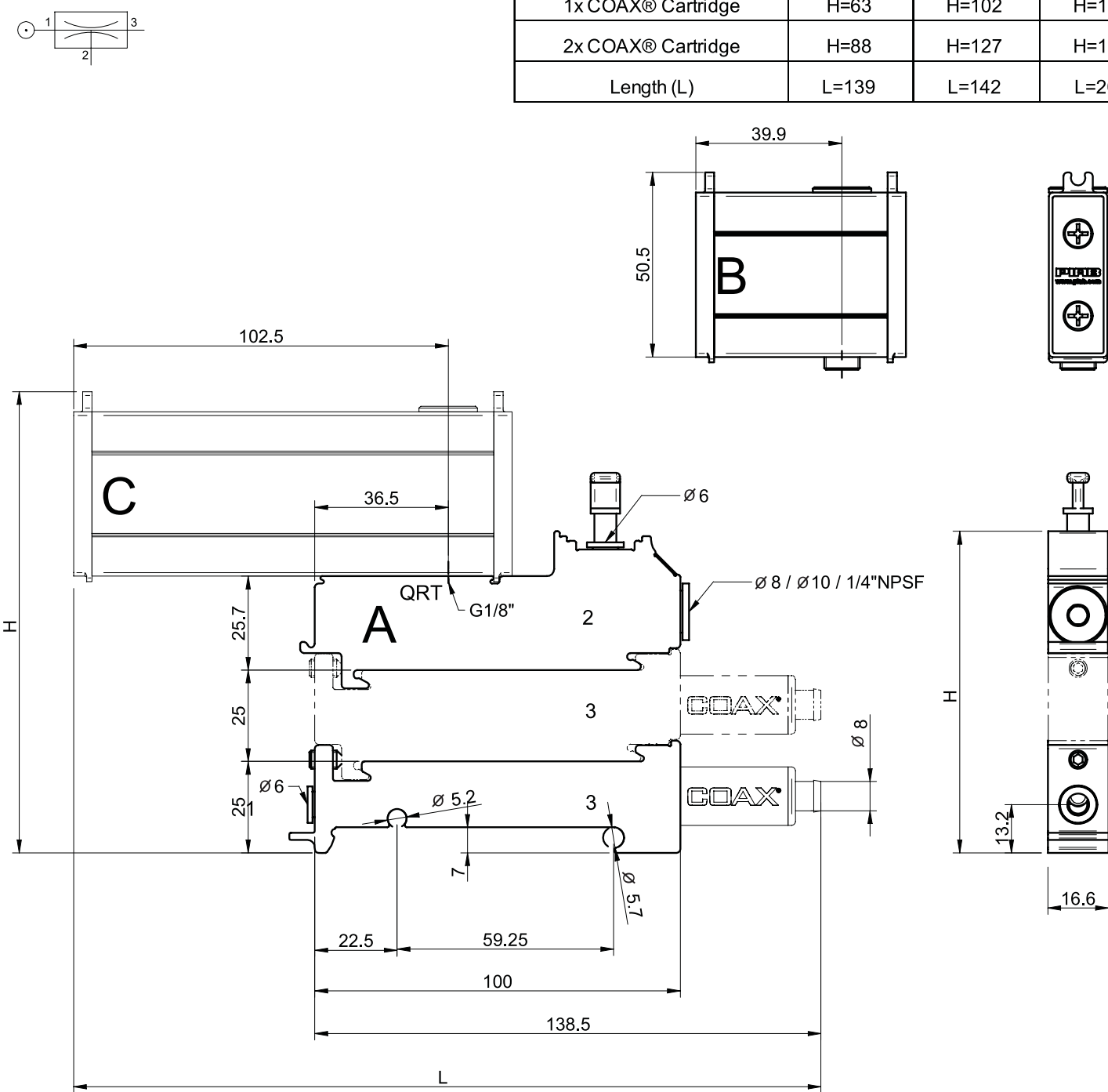
For detailed information on Valve DS 23, see separate datasheet.

5. Select vacuum sensing	P3010 Code
No vacuum sensing	00
Vacuum switch, adjustable, PNP NO MM8	01
Vacuum switch, adjustable, NPN NO MM8	02
Vacuum switch, adjustable, PNP NO LM8	05
Vacuum switch, adjustable, PNP NO DM8	09
Vacuum switch, adjustable, NPN NO DM8	10
Vacuum switch inductive, adjustable with knob	11
Vacuum switch VS4015 $\varnothing 6$, 30 -kPa	18
Vacuum switch VS4015 $\varnothing 6$, 50 -kPa	19
Vacuum switch VS4015 $\varnothing 6$, 70 -kPa	20

For detailed information on vacuum switches, see separate datasheets.

Example	Ordering number
Housing, connection $\varnothing 6$ mm Pi12-3FSx1, Function Quick-release module 10/6 3cm ³ , no energy saving, no vacuum sensing	P3010.00.AE.04.AA.00

	A	B	C
1x COAX® Cartridge	H=63	H=102	H=102
2x COAX® Cartridge	H=88	H=127	H=127
Length (L)	L=139	L=142	L=205



ORDERING INFORMATION, ACCESSORIES

Description	Art. No.
Sealing kit P3010, NBR	0104201

The sealing kit includes flap valves, compressed air filter and vacuum filter.