

L56



- ▶ Large vacuum flows
- ▶ Small size and low weight
- ▶ Good for handling porous materials or if leakage is present

Supplied with two through-flow silencers.

TECHNICAL DATA

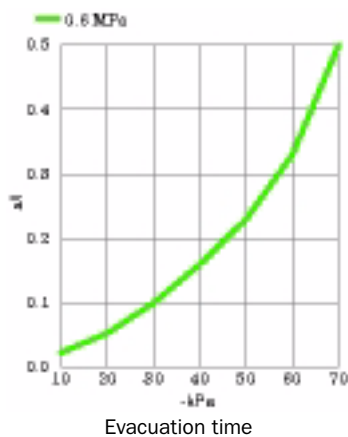
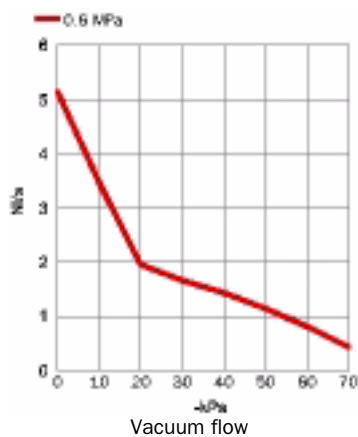
| Description | Unit | Value |
|---------------------|-------|---------------------------|
| Feed pressure, max. | MPa | 0.7 |
| Noise level | dB(A) | 57-68 |
| Temperature range | °C | -20-80 |
| Weight | g | 420 |
| Material | | Al, PA, POM, ABS, SS, NBR |

VACUUM FLOW

| Feed pressure MPa | Air consumption NI/s | Vacuum flow (NI/s) at different vacuum levels (-kPa) | | | | | | | | | | Max vacuum -kPa |
|----------------------|-------------------------|--|-----|-----|-----|-----|-----|------|------|----|----|--------------------|
| | | 0 | 10 | 20 | 30 | 40 | 50 | 60 | 70 | 80 | 90 | |
| 0.60 | 4.0 | 5.1 | 3.5 | 2.0 | 1.7 | 1.4 | 1.1 | 0.81 | 0.43 | - | - | 75 |

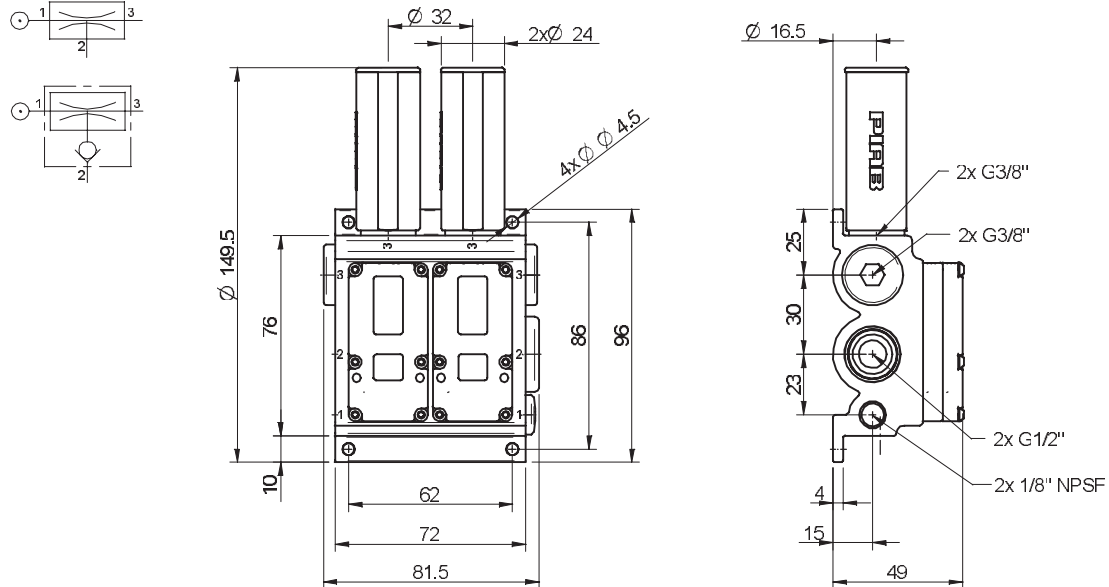
EVACUATION TIME

| Feed pressure MPa | Air consumption NI/s | Evacuation time (s/l) to reach different vacuum levels (-kPa) | | | | | | | | | | Max vacuum -kPa |
|----------------------|-------------------------|---|-------|------|------|------|------|------|----|----|----|--------------------|
| | | 10 | 20 | 30 | 40 | 50 | 60 | 70 | 80 | 90 | | |
| 0.60 | 4.0 | 0.023 | 0.053 | 0.10 | 0.16 | 0.23 | 0.33 | 0.50 | - | - | 75 | |



ORDERING INFORMATION

| Description | Art. No. |
|---|----------|
| Vacuum pump MINI L56, conn. K, NBR sealings | 0102797 |
| Vacuum pump MINI L56, conn. K, NBR sealings, non-return valve | 0102798 |



ORDERING INFORMATION, ACCESSORIES

| Description | Art. No. |
|--------------------------------|----------|
| Sealing kit MINI 30–60, NBR | 0100491 |
| Sealing kit MINI 30–60, Viton® | 0100491V |

Sealing kits include flap valves, gaskets and compressed air filters.

Vacuum pumps
MINI