

### Duplex Filter Pi 470

Operating pressure up to 350 bar, Nominal size 50 - 450

#### 1. Features

##### Efficient filters for modern hydraulic systems

- Modular design
- Compact design
- Minimal pressure drop
- Optical/electrical contamination control
- Threaded connections
- Ergonomic switch-over handle with safety lock and pressure compensation
- User-optimized one-hand-operation

##### Quality filters, easy to service

- Highly efficient Sm-x Filter elements
- Guaranteed retention rates according multi-pass test ISO 16889
- High dirt holding capacity and differential pressure stability providing optimal element service life
- Extensive options available from the MAHLE industrial filter range

##### World-wide distribution

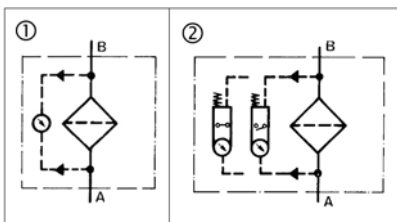


## 2. Quality assurance

MAHLE filter and filter elements are manufactured respectively, tested in accordance with following international standards:

Norm	Designation
DIN ISO 2941	Hydraulic fluid power filter elements; verification of collapse/burst resistance
DIN ISO 2942	Hydraulic fluid power filter elements; verification of fabrication integrity
DIN ISO 2943	Hydraulic fluid power filter elements; verification of material compatibility with fluids
DIN ISO 3723	Hydraulic fluid power filter elements; method for end load test
DIN ISO 3724	Hydraulic fluid power filter elements; verification of flow fatigue characteristics
ISO 3968	Hydraulic fluid power-filters-evaluation of pressure drop versus flow characteristics
ISO 10771.1	Fatigue pressure testing of metal containing envelopes in hydraulic fluid applications
ISO 16889	Hydraulic fluid power filters; multipass method for evaluation filtration performance of a filter element

## 3. Symbols



## 4. Order numbers

Example for ordering filters:

1. Housing design	2. 2x Filter element
V = 300 l/min and optical/electrical contamination indicator Type: Pi 4730-015 Order number: 76938583	Sm-x vst 10 Type: Pi 3230 Sm-x vst 10 Order number: 77680416

### 4.1 Gehäuseausführung\*

Nominal size NG [l/min]	Order number	Type	with indicator cavity	① with optical indicator	② with electrical indicator
50	70304313	Pi 4705-010			
	70304297	Pi 4705-014			
	70304303	Pi 4705-015			
80	70304316	Pi 4708-010			
	70304298	Pi 4708-014			
	70304304	Pi 4708-015			
110	70304317	Pi 4711-010			
	70304299	Pi 4711-014			
	70304305	Pi 4711-015			
150	70304327	Pi 4715-010			
	76938534	Pi 4715-014			
	76938542	Pi 4715-015			
300	70304328	Pi 4730-010			
	76938575	Pi 4730-014			
	76938583	Pi 4730-015			
450	70304329	Pi 4745-010			
	76938617	Pi 4745-014			
	76938625	Pi 4745-015			

When filter with non contamination indicator configuration is selected the collapse pressure of the element may not be exceeded.

\* Further housing designs available upon request.

#### 4.2 Filter elements \*

Nominal size NG [l/min]	Order number	Type	Filter material	Collapse pressure [bar]	Filter surface [cm <sup>2</sup> ]
<b>50</b>	77680192	Pi 2205 Sm-x vst 3	Sm-x vst 3	<b>210</b>	<b>425</b>
	77943533	Pi 5205 Sm-x vst 6	Sm-x vst 6		
	77680382	Pi 3205 Sm-x vst 10	Sm-x vst 10		
	77680507	Pi 4205 Sm-x vst 25	Sm-x vst 25		
<b>80</b>	77680200	Pi 2208 Sm-x vst 3	Sm-x vst 3	<b>210</b>	<b>850</b>
	77943541	Pi 5208 DN Sm-x vst 6	Sm-x vst 6		
	77681190	Pi 3208 Sm-x vst 10	Sm-x vst 10		
	77680515	Pi 4208 Sm-x vst 25	Sm-x vst 25		
<b>110</b>	77680218	Pi 2211 DN Sm-x vst 3	Sm-x vst 3	<b>210</b>	<b>1275</b>
	77943558	Pi 5211 Sm-x vst 6	Sm-x vst 6		
	77680390	Pi 3211 Sm-x vst 10	Sm-x vst 10		
	77680523	Pi 4211 Sm-x vst 25	Sm-x vst 25		
<b>150</b>	77680226	Pi 2215 DN Sm-x vst 3	Sm-x vst 3	<b>210</b>	<b>2010</b>
	77955123	Pi 5215 Sm-x vst 6	Sm-x vst 6		
	77680408	Pi 3215 Sm-x vst 10	Sm-x vst 10		
	77680531	Pi 4215 Sm-x vst 25	Sm-x vst 25		
<b>300</b>	77680234	Pi 2230 Sm-x vst 3	Sm-x vst 3	<b>210</b>	<b>3800</b>
	77955131	Pi 5230 Sm-x vst 6	Sm-x vst 6		
	77680416	Pi 3230 Sm-x vst 10	Sm-x vst 10		
	77680549	Pi 4230 Sm-x vst 25	Sm-x vst 25		
<b>450</b>	77680242	Pi 2245 DN Sm-x vst 3	Sm-x vst 3	<b>210</b>	<b>5600</b>
	77955149	Pi 5245 Sm-x vst 6	Sm-x vst 6		
	77680424	Pi 3245 Sm-x vst 10	Sm-x vst 10		
	77680556	Pi 4245 Sm-x vst 25	Sm-x vst 25		

\* Further elements available upon request.

# MAHLE

*Industrial Filtration*

MAHLE Filtersysteme GmbH  
Industriefiltration  
Schleifbachweg 45  
D-74613 Öhringen  
Tel: +49 (0) 7941/67-0  
Fax +49 (0) 7941/67-23429  
industriefiltration@mahle.com  
www.mahle-industriefiltration.com  
01/2007