

# MMC Smart Drive Servo Amplifiers

G&L Motion Control's MMC Smart Drive servo amplifiers provide 0.5kW to 24kW continuous output power in a compact, easy-to-apply package. Available in both 230VAC and 460VAC systems, MMC Smart Drives operate over a wide line voltage range.

Application of MMC Smart Drives is simple. The integral power supply and plug-and-play cable sets simplify installation. Configuration, tuning and maintenance are intuitive using PiCPro software with features including basic and expert parameter views, a software oscilloscope and auto-tune.

Use PiCPro's ladder logic, function block and structured text programming languages to develop complete multi-axis motion control solutions combining MMC Smart Drives and MMC Controls.



Feature	Benefit
Auto Tune	Automatically detect load inertia for simple servo tuning
Digital design	Digital Signal Processor control for reliable, repeatable setup
High Bandwidth Control Loops	Accommodates changing load conditions found in industrial machinery applications
Plug-and-Play Cable Sets	Engineered motor power, motor feedback and control interface cable sets for noise-immune easy installation
Software Protection	Over Voltage, Over Current and Over Temperature detection to protect the drive, motor and application
Hardware Protection	Phase-to-phase and phase-to-ground short circuit protection
Complete Motor Family	Choose from seven standard motor families to get an exact fit for your application
Integral Power Supply	Built-in Power Supply for simple installation
24V DC Drive Control Power	Maintain Drive Control power while line voltage is removed for troubleshooting and feedback tracking
Feedback support	Select feedback technology appropriate to your application: incremental encoder, high resolution encoder or resolver
Industrial I/O	Optically isolated I/O for noise immunity
PiCPro Software	Drive setup and application motion programming using a single easy-to-navigate Windows program
Software Oscilloscope	Graphical real-time view of servo system performance
Agency Approval	UL, cUL and CE Mark allow worldwide application

## G&L Motion Control, LLC

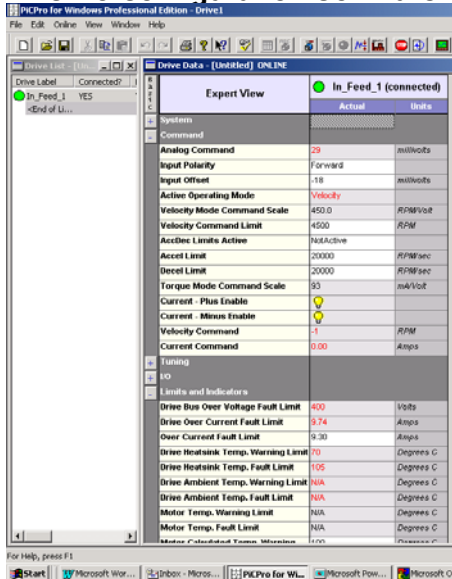
672 South Military Road, PO Box 1960, Fond du Lac, WI 54936-1960, USA  
 Telephone: (920) 921-7100, Fax: (920) 906-7669, www.glcontrols.com

A Company of  
 ThyssenKrupp  
 Technologies

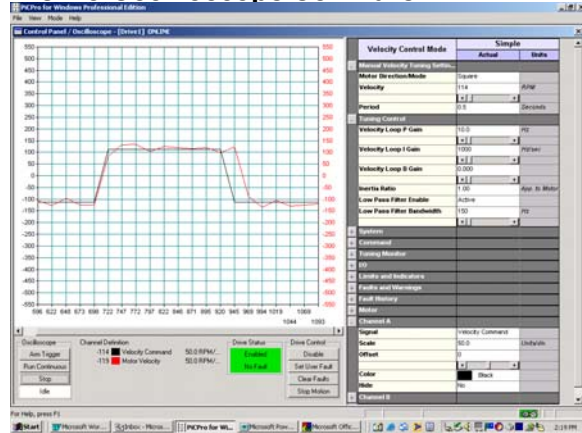


ThyssenKrupp

## PiCPro Configuration Software



## PiCPro Oscilloscope Software



PiCPro provides drive configuration and tuning as well as motion control programming in an intuitive Windows environment.

## MMC Smart Drive Family

Model	Package	Cont. Current (amps)	Peak Current (amps)	Dimensions inches (mm) WxHxD
MMC-SD-0.5-230	Micro	2.5	7.5	3.69(94) x 10.13(257) x 6.12(156)
MMC-SD-1.0-230	Micro	5.0	15.0	4.69(119) x 10.13(257) x 6.12(156)
MMC-SD-2.0-230	Micro	10.0	30.0	4.69(119) x 10.13(257) x 6.12(156)
MMC-SD-1.3-460	Size 1	3.0	6.0	4.14(105) x 13.66(347) x 8.35(212)
MMC-SD-2.4-460	Size 1	5.5	11.0	4.14(105) x 13.66(347) x 8.35(212)
MMC-SD-4.0-460	Size 2	9.0	18.0	4.15(106) x 16.85(428) x 11.35(288)
MMC-SD-6.0-460	Size 2	13.5	27.0	4.15(106) x 16.85(428) x 11.35(288)
MMC-SD-8.0-460	Size 2	18.0	36.0	4.15(106) x 16.85(428) x 11.35(288)
MMC-SD-12.0-460	Size 3	27.5	55.0	6.1(155) x 21.65(550) x 11.36(288)
MMC-SD-16.0-460	Size 3	36.5	73.0	6.1(155) x 21.65(550) x 11.36(288)
MMC-SD-24.0-460	Size 3	55.0	110.0	6.1(155) x 21.65(550) x 11.36(288)

Model Naming Convention: MMC-SD-continuous output power-nominal line voltage. Operating voltage for 230 VAC drives is 100-240 VAC single phase and for 460 VAC drives is 180-528 VAC three phase.

## MMC Smart Drive Features

Feature	Description
Assignable Digital Inputs	8 24V DC optically isolated inputs
Assignable Digital Outputs	4 24V DC optically isolated outputs, short circuit protected
Assignable Relay Output	1 Relay Output (typically used for brake control)
Analog Input	1 Analog Velocity or Torque command input
Feedback One (F1)	Motor feedback – incremental encoder, high resolution encoder, resolver (resolver interface option module required)
Feedback Two (F2)	Secondary feedback – incremental encoder
Drive Control Power	24V DC input for control power, independent of power section line voltage input

G&L Motion Control, LLC  
 672 South Military Road, PO Box 1960  
 Fond du Lac, WI 54936-1960, USA  
 Telephone: (920) 921-7100, Fax: (920) 906-7669  
[www.glcontrols.com](http://www.glcontrols.com)